

# Monte Nisa

---

The villa, the surroundings.









#### The Villa:

- short story
- the position
- contacts
- photo

#### The surroundings:

- around the villa
- Florence
- Siena

Website: <https://www.montenisa.com/>



# The villa

---



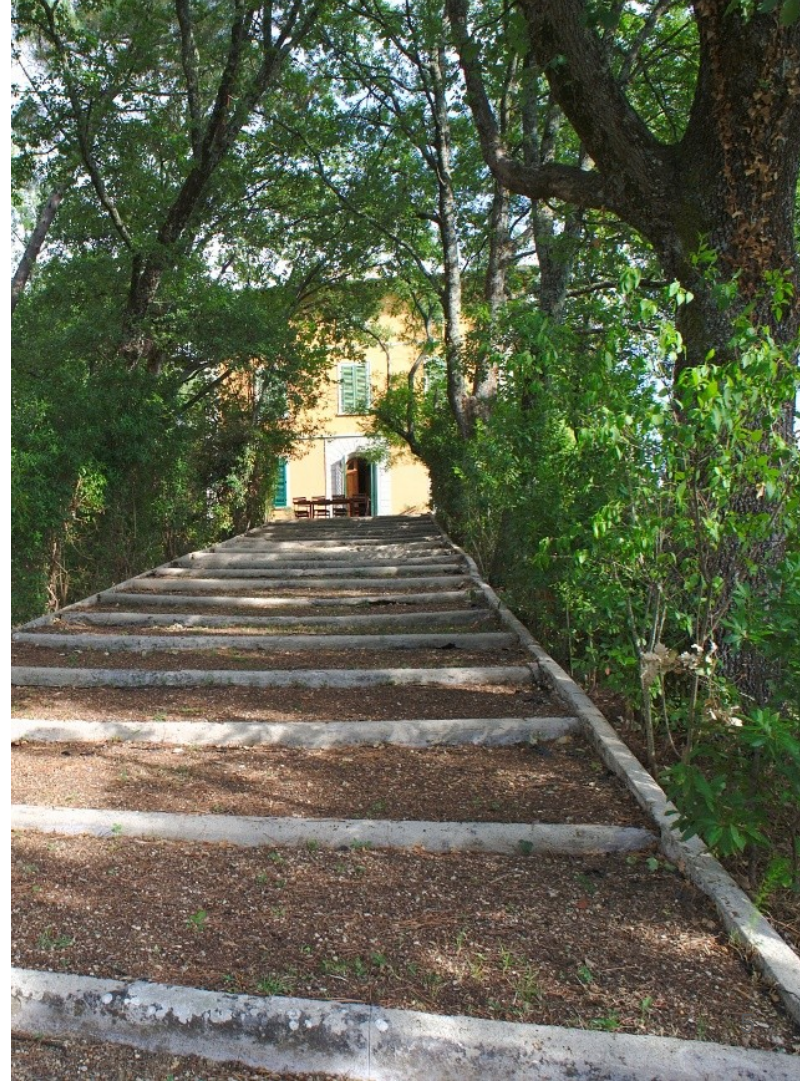


# Monte Nisa

Monte Nisa is a villa overlooking the Chianti hills of San Casciano in Val di Pesa.

This is a holiday home consisting of two apartments that can accommodate 6 people each for a total of 12 people, No meals or other professional services are provided, just a whiff of a tourist destination.

It is possible to rent the entire property for exclusive use - "Total Nisa" or just one apartment - "Terra Nisa" for the ground floor apartment, "Sopra Nisa" for the first floor apartment. By renting the entire structure you have the exclusive use of the swimming pool and the park, while if you rent an apartment the pool and park are shared with the guests of the other apartment.





## La storia

Monte Nisa is a villa built in 1934 on the top of a hill in Tuscany, in the Chianti Classico wine production area. Its quiet, panoramic and sunny position was chosen with great care and passion by the first owner, named Manetti, and the original toponym of "Villa Manetto" derived from his name.

Manetti designed the villa to make it his "buen retiro" following and personally directing the construction work and taking care of every little detail.

Subsequently the heirs sold the villa which since then experienced a troubled period, becoming from time to time a summer colony, recreational club, warehouse and even military command during the Second World War, suffering damage due to cannon fire.

In the period in which the owners were the Marquises Antinori the name of the villa was changed and from "Manetto" it became "Montenisa".

There were then other changes of ownership until in 1976 the villa was purchased by the current owners who began the restoration.





## The park

Monte Nisa has two hectares of park, half wood and half pine, completely fenced and for the exclusive use of guests.





# The position

Monte Nisa is located just 4 km from the Tavarnelle exit of the Firenze Siena highway.

The nearest village is Montefiridolfi, 900 meters away, with a grocery shop, bar, newsagent and restaurant.

Supermarket, pharmacy, banks with ATMs, post office, butchers and all other commercial activities are about 10 minutes by car, in Mercatale Val di Pesa.

The distances from the main tourist destinations are:

Florence - Ponte Vecchio km. 28

Peretola - airport km. 22.4

Galileo Galilei - airport km. 82

Siena km. 52

Pisa km. 86

San Gimignano km. 33

Given its position Montenisa is usually used for a quiet and relaxing stay in the countryside, interspersed with short excursions to the main tourist resorts or visits to the Chianti Classico wine cellars.







## The apartment on the ground floor

The ground floor apartment has three double bedrooms, one bedroom with single bed, a kitchen with fireplace, and a bathroom and a large living room with billiards and TV area. The size of the apartment is approximately 140 square meters.

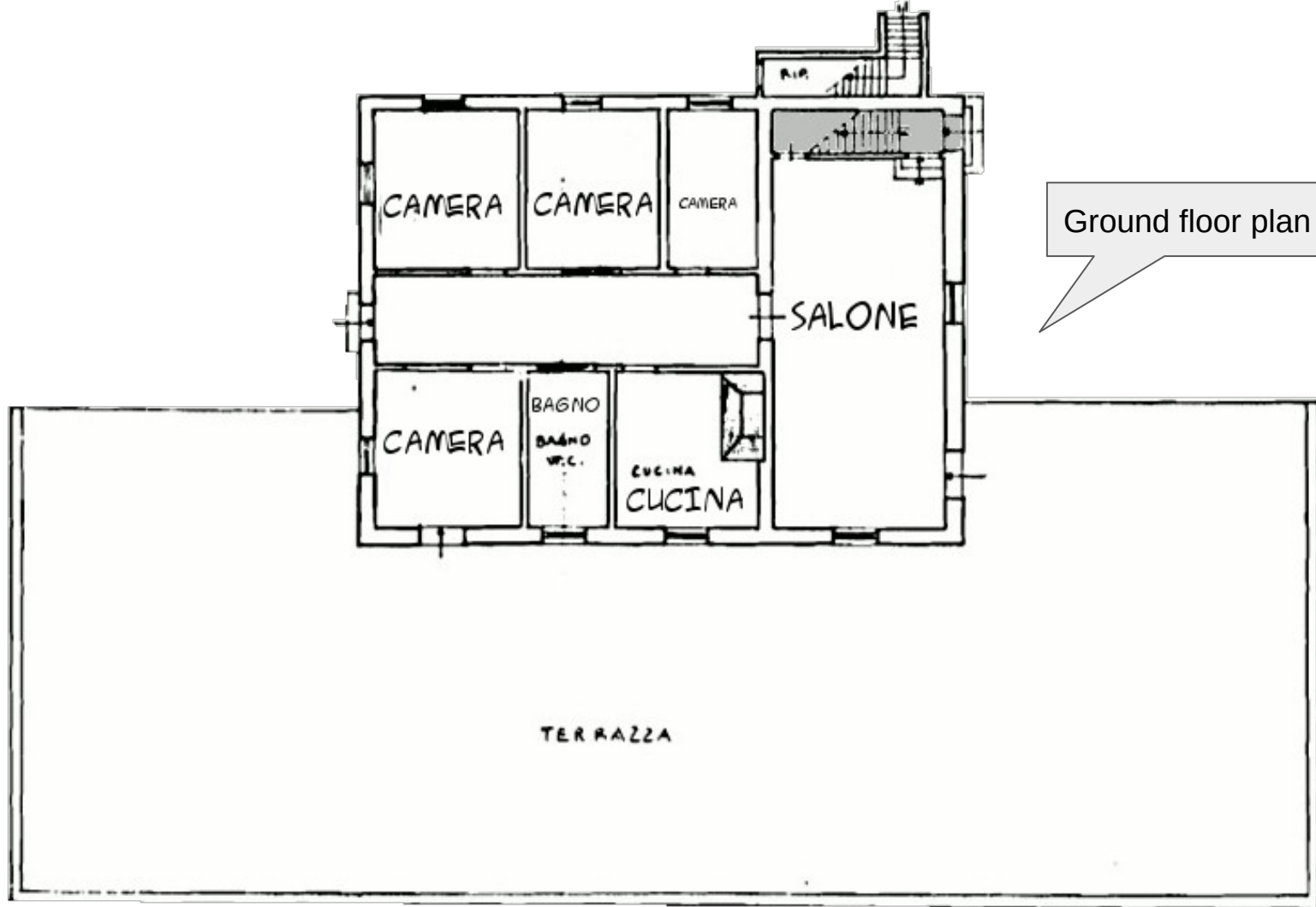
The kitchen is equipped with oven, induction hob, microwave, refrigerator with freezer, espresso machine, toaster, American coffee machine, dishwasher and electric kettle.

In the apartment there are also a washing machine and an iron.

Both TV sets are equipped with satellite TV (TVSat platform) and Netflix.

Parking is on the property and free.

The internet connection is wired and wifi, it is free and covers both the internal and most of the external areas.







1



2

## Apartment on the ground floor

1 - The central  
corridor

2,3,4 - The  
bedrooms



3



4



## Apartment on the ground floor

1 – The little bedroom

2 – The kitchen

3 – The bathroom

4 – The living room – TB  
side





## The apartment of the first floor

The apartment has three double bedrooms, a kitchen, a large living room and a bathroom, it is very bright with a view of the Chianti hills.

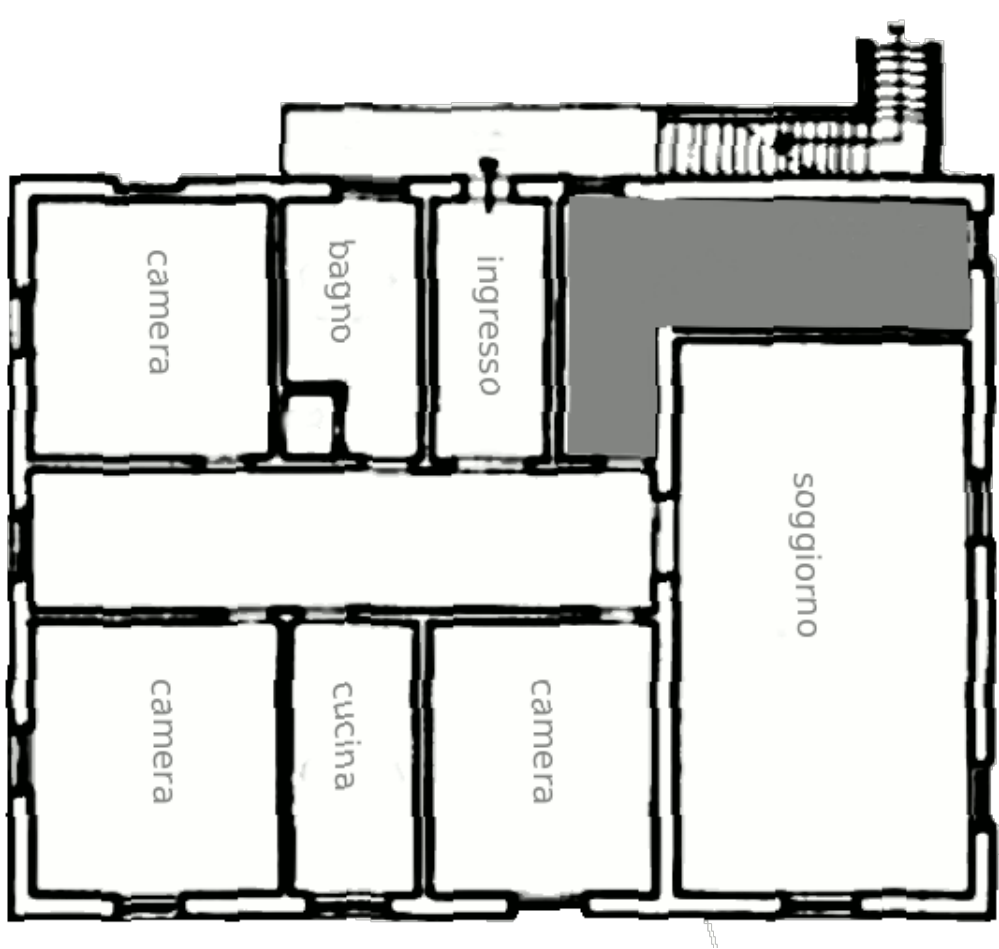
To access the apartment there is a short flight of stairs. The size of the apartment is approximately 140 square meters.

The kitchen is equipped with oven, induction hob, microwave, refrigerator with freezer, espresso machine, toaster, American coffee machine, dishwasher and electric kettle.

In the apartment there are also a washing machine and an iron.

In the living room there is a TV with satellite channels (TVSat platform) and Netflix.

Parking is inside the property and free, and the internet connection is free, wired and wifi and covers both the internal and most of the external areas.



First floor plan





## The apartment of the first floor

1 - The central corridor

2 – The entrance

3 – The living room

4 – The kitchen



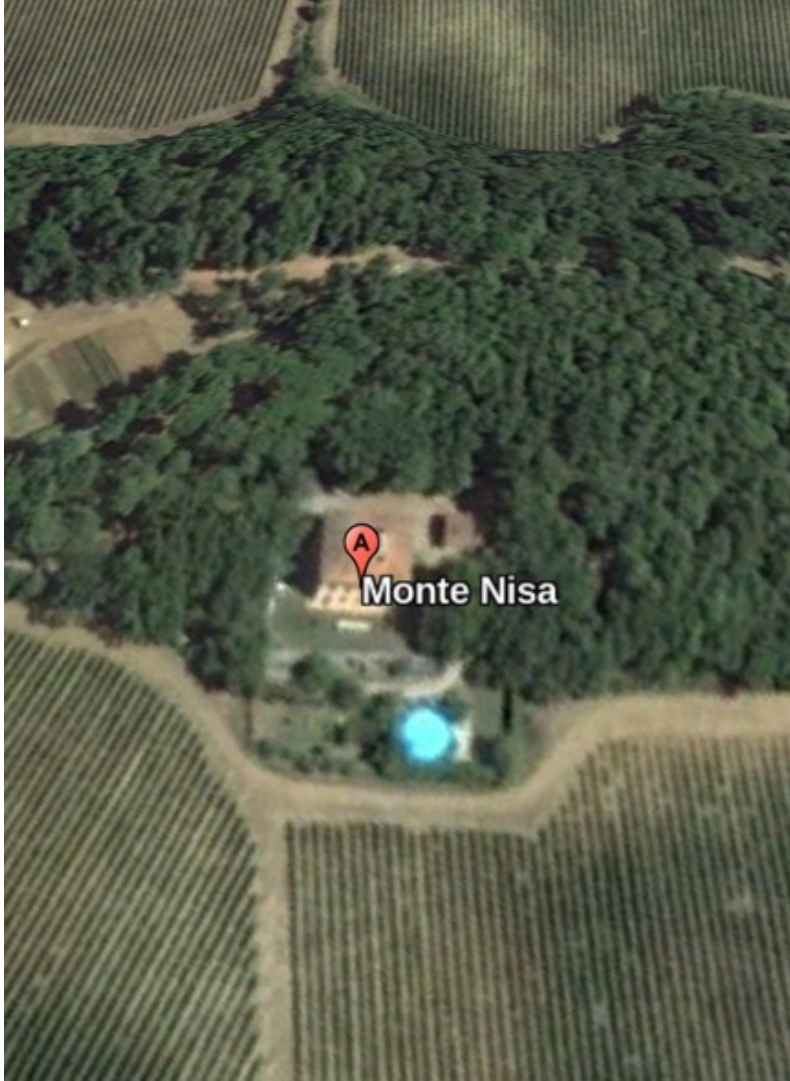


## The apartment of the first floor

1,2,3 – The bedrooms

3 – The bathroom





## Contacts

Reservations for Villa "Monte Nisa"  
are managed by Belvilla.

email: [info@montenisa.com](mailto:info@montenisa.com)

Address: Via Santa Maria Macerata 72, Montefiridolfi,  
50026 San Casciano Val di Pesa, Florence

GPS 43.60147222,11.222925

mapcode: TJGTK.73Y0

Map url: <https://goo.gl/Xcgtnz>

Website: <https://www.montenisa.com/>



## The surroundings of Monte Nisa





# Montefiridolfi

Montefiridolfi is less than 1 km from Monte Nisa and is an agricultural village located in the Chianti countryside. The town is located 900 meters from Monte Nisa

In the main square paved in terracotta there is a 14th century tower house, a newsstand and a grocery store, while just off the square there is a small restaurant, called "A casa mia".

There are no particular places to visit in Montefiridolfi, even if in the surroundings of the town there is no lack of memories of the past.

There are in fact two castles, the castle of Montefiridolfi and the castle of Bibbione, today transformed into tourist residences, the small church of Santa Cristina and the Etruscan tomb called dell'Arciere and the monastery of the Santissima Annunziata, commonly called "of the New Place" or "Conventino", now deconsecrated and has become a private home.



1



2

## Montefiridolfi

1 - La piazza principale

2 - Scene dalla piazza

3 - L'edicola

4 - La strada principale



3



4





1



2

## The Surroundings of Montefiridolfi

1 - The remains of the Etruscan tomb

2 - The castle and the church of S. Cristina



3



4

3 - The castle of Bibbione

4 - The "Conventino"  
(the small convent)



## Mercatale Val di Pesa

Mercatale in Val di Pesa is a small town of about two thousand inhabitants located 6 km away from Monte Nisa.

In Mercatale there are all services, from hairdressers to banks to the post office, all shops and a supermarket with wine shop.

The origin of Mercatale dates back to the late Middle Ages, but except for a fresco in the church and villa Nunzi, built by the Strozzi family, it has no particular monuments or places of interest, but is still known because:

in the eighties it was nicknamed "Little Russia" because almost the entire population was members of the Communist Party: it was the last town to host Pietro Pacciani, accused of being one of the perpetrators of the murders of the so-called "Monster of Florence".



## **Mercatale Val di Pesa**

1 - The main square

2 - The monument in the main square

3 - Piazza del popolo

4 - The exterior of Villa Nunzi





## The weekly markets

The weekly markets have unfortunately lost much of the importance they had before the advent of mobile phones and large shopping centers, they are no longer an important moment of aggregation and even the supply of goods has flattened out and dropped a lot in quality.

However, it remains an interesting spontaneous spectacle of people, colors and goods.

The most important weekly markets held around Monte Nisa are:

San Casciano - every Monday morning, distance 9 km, 13 minutes by car, link map <https://goo.gl/maps/YeFQmLiLe192>  
Greve - every Saturday morning, distance 16.2 km, 24 minutes by car, link map <https://goo.gl/maps/KsWZhX5PZI92>  
Poggibonsi - every Tuesday morning, distance 22.4 km, minutes by car, link map <https://goo.gl/maps/1S5nihnfKF92>

It is always advisable to arrive early at the market to avoid queues and parking difficulties.



**Photos taken  
at weekly markets**







**Photos taken  
at weekly markets**







## A short tour to get to know the surroundings

Departure from Monte Nisa

Antinori in Chianti Classico - winery, [antinorichianticlassico.it](http://antinorichianticlassico.it)

San Donato - very characteristic historical center

Pietracupa Sanctuary - ancient sanctuary

Panzano - perched on a hill, church and castle

Lamole - small village


Greve in Chianti - the central square is beautiful

Montefioralle - an ancient village which is very well preserved

Badia A Passignano - ancient abbey

Arrival in Monte Nisa after about 70 km.

Route link on google map: <https://goo.gl/maps/2G3apE1wMarnk>

 via Via di Fabbrica and Via Cassia/SR2 1 h 52 min  
64.1 km  
1 h 52 min without traffic



## The surroundings of Monte Nisa

1 - [Cantina Antinori](#)

2 - [San Donato](#)

3 - [Santuario Pietracupa](#)

4 - [Panzano](#)



## The surroundings of Monte Nisa

1 - [Lamole](#)

2 - [Greve](#)

3 - [Montefioralle](#)

4 - [Badia a Passignano](#)





## Antiques fair in Arezzo

In Arezzo - about 100 km away, 1 hour and 10 minutes by car - there is an antiques market every first Sunday of the month.

The market takes place throughout the day, but it is advisable to arrive very early to avoid traffic and parking difficulties.

The stalls are in the city center all around piazza Grande and piazza Duomo.

The sellers are very numerous and the exhibits are of all prices, ranging from postcards to restored antique furniture.

It is a market that intrigues both for the variety of objects on display and for the spectacle of the people who frequent it.

# The departure of the “Eroica”

**T**he **Eroica** is a cycling event and the departure of cyclists with bicycles and period clothing is a particular spectacle. The Eroica is an event open to all, there are in fact 5 routes with varying difficulties.

The Eroica is not a race, but the complete path that gives the right to claim the title of "hero" is actually very hard because it runs on dirt roads with numerous ups and downs and overcoming steep gradients and is very difficult to tackle with the racing bike of yesteryear.

Departures are staggered, but usually arriving around 8am in the morning you can see an unusual and interesting show.

The event is always held on the first Sunday of October in Gaiole in Chianti which is about 40 km from Monte Nisa and usually takes 51 minutes by car.





# Firenze

Florence is about 28 km from Monte Nisa and you could even reach it using public transport, a choice that requires time and a spirit of adaptation.

Usually the car is the best way to reach Florence, the main possibilities are: park at the Villa Costanza exchange car park (Tramvia Parking, Via Sette Regole, 73B, 50018 Scandicci FI - or directly from the A1 motorway) and then get on the tram which in about 30 minutes will take you to the Santa Maria Novella station and from there in about 15 minutes you can easily reach Piazza della Signoria, the cathedral and the Uffizi Gallery. Total time about 1 hour and 20 minutes, slow but quiet.

go by car directly to Piazza Stazione, leaving the car in the station car park (Parking Railway Station 16, Piazzale Montelungo, 50129 Firenze FI) and then reach the historic center on foot Total time about an hour, parking is expensive and reaching it can be difficult due to traffic and work in progress.

park in the S. Ambrogio car park (Florence Parking - Parking Sant'Ambrogio, Via Ferdinando Paolieri, 50122 Firenze FI) - about 41 minutes. In the morning, leaving the parking lot, you will find yourself immersed in the real Florentine market, and in 15 minutes you can walk to Piazza della Signoria.

Total time about an hour, parking is on average expensive and reaching it can be difficult due to traffic.



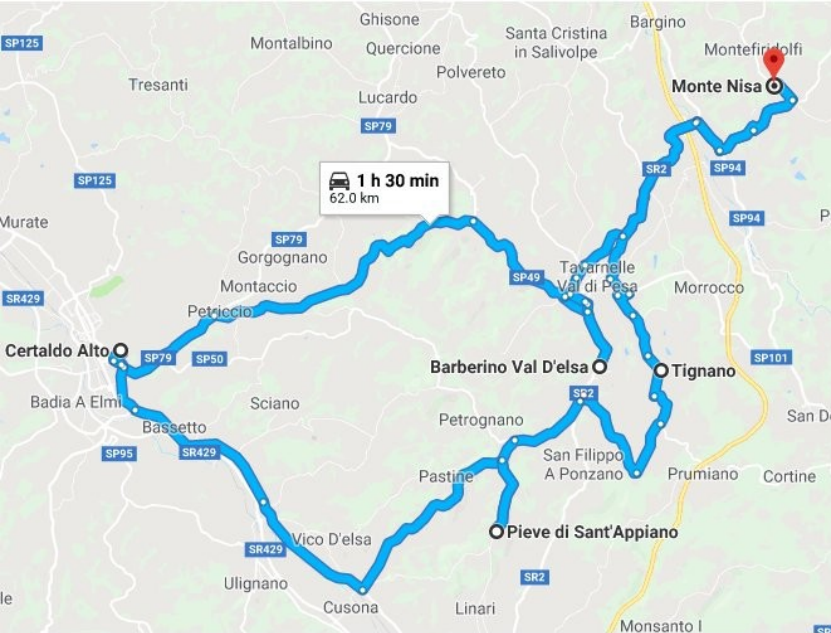


## Siena

Siena is located about 52 kilometers from Monte Nisa and can be reached by car in about 40 minutes.

The city center is completely closed to the traffic of private vehicles, so it is necessary to use one of the different car parks around the city, all for a fee and open 24 hours a day.

The closest car park coming from Monte Nisa is the Santa Caterina car park, (Via Esterna di Frontebranda, 53100 Siena). From there, with an escalator and a short walk, you can reach piazza del Campo in about 12 minutes.



## Villages northwest of Montenisa

Partenza da Monte Nisa

Barberino Valdelsa

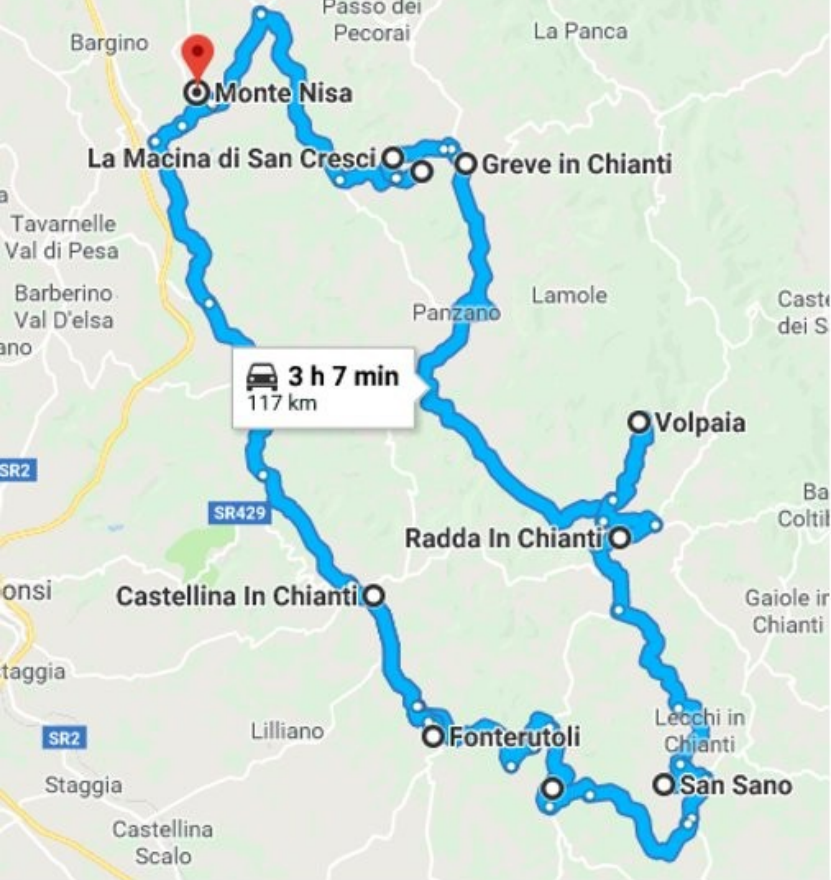
Certaldo Alto

Pieve di Sant'Appiano

Tignano

Ritorno a Monte Nisa dopo circa 62 km.

Link itinerario su google map: <https://goo.gl/maps/UuijToqTigL2>



via SP118

3 h 7 min without traffic

3 h 7 min

117 km

## Borghi a nord est di Montepulciano

Partenza da Monte Nisa

Montefioralle

Pieve di San Cresci

Greve in Chianti

Volpaia

Radda in Chianti

San Sano

Fonterutoli

Castellina in Chianti

Arrivo a Monte Nisa dopo circa 117 km.

Link itinerario su google map: <https://goo.gl/maps/uv2dGfsPoFk>





## Borghi a sud ovest di Montenisa

Partenza da Monte Nisa

Linari

San Gimignano

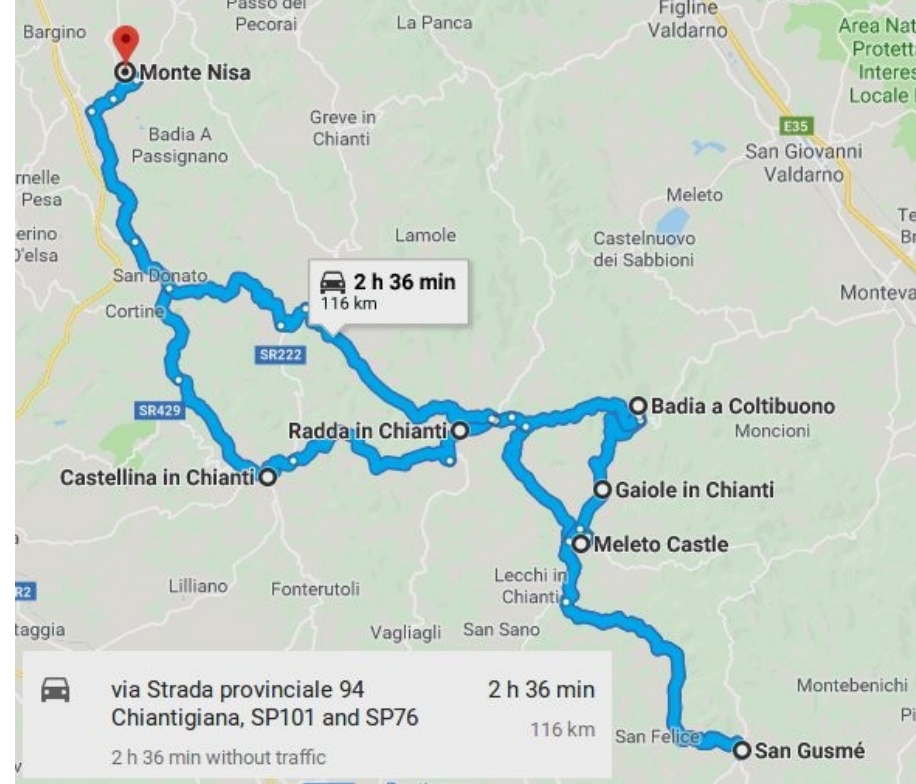
Poggibonsi

Colle Val d'Elsa

Monteriggioni

Arrivo a Monte Nisa dopo circa 115 km.

Link itinerario su google map: <https://goo.gl/maps/v2CrEBygvJF2>



## Borghi a sud est di Montenisa

Partenza da Monte Nisa

Castellina in Chianti

Radda in Chianti

Castello di Meleto

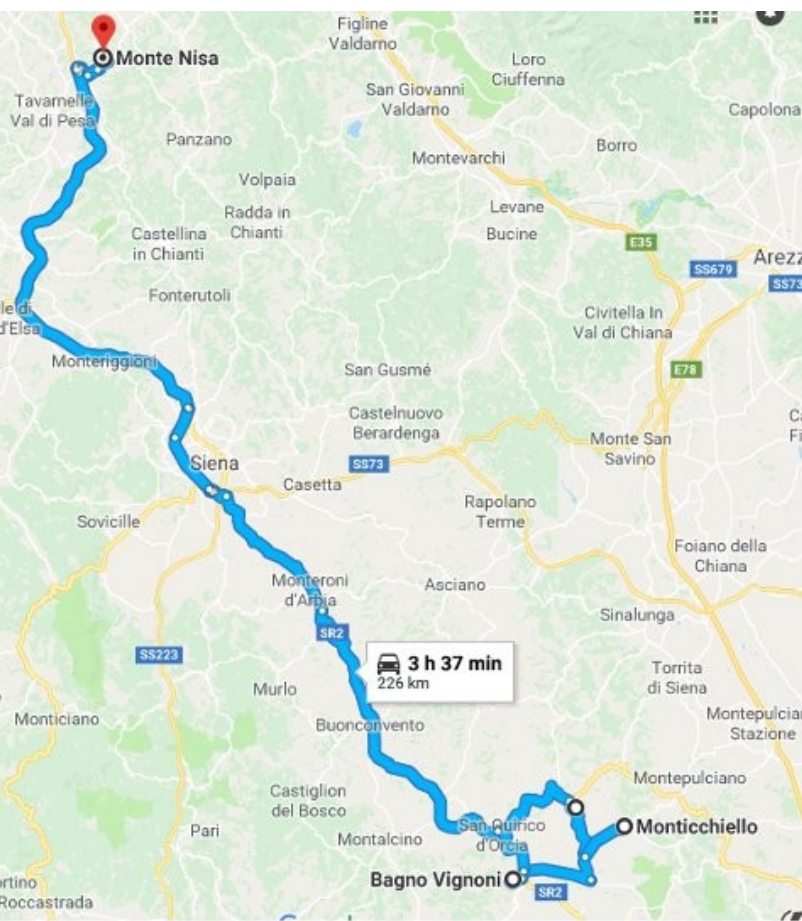
San Gusmè

Gaiole in Chianti

Badia a Coltibuono

Arrivo a Monte Nisa dopo circa 116 km.

Link itinerario su google map: <https://goo.gl/maps/Dcxtrf6RU732>



via Raccordo Autostradale Firenze - Siena and SR2  
3 h 37 min  
226 km

## Borghi nel senese

Partenza da Monte Nisa

Pienza

Monticchiello

Bagno Vignoni

Ritorno a Monte Nisa dopo circa 226 km.

Link itinerario su google map: <https://goo.gl/maps/LRKU3gUknn12>